

2021 Making MARKS

JELF'S ALUMNI SPOTLIGHT * FIRST EDITION



FROM ONE *Jelfie* TO THE NEXT

This inaugural edition of JELF's alumni newsletter includes some extraordinary statistics! Indeed, it was a year of unprecedented challenges for so many of us, including JELF.

As a JELFie myself, I know how critical this help can be to students confronting difficult financial situations. In fact, it is why I have been a JELF volunteer and financial supporter for the past 18 years. As a college student I certainly appreciated JELF's support, but it was not until I graduated that I came to understand **JELF is so much more than a student loan.**

It is the Jewish community coming together to ensure **nothing stands in the way of education.** It is a tradition that goes back for millennia. When former recipients become JELF volunteers and financial contributors, the covenant continues from generation to generation *-Lidor v'dor.*

So, no matter where you are in your JELFie journey, keep in touch with JELF and when circumstances permit, or consider a financial contribution to support our mission.

After all, you are proof that support of JELF yields a very meaningful return on investment!

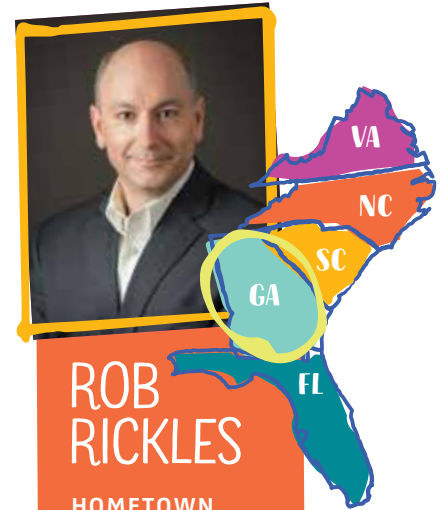
Rob

ROB RICKLES
JELF BOARD CHAIR ELECT

JELF.ORG/ALUMNI Take the alumni survey + share your JELFie + bring your JELF experience full circle!

facebook.com/groups/jelfrecipients

@JELFLoans + Get involved. info@jelf.org



ROB RICKLES

HOMETOWN
Atlanta, GA

NORTHWESTERN
1984 - 1988

GEORGIA STATE
1996 - 1999

MERRILL
Vice President



WITH A MINIMUM
GIFT OF
\$18+
YOU CAN CONTRIBUTE
TO DRIVING THE SUCCESS
OF JELF'S DESERVING
2021 APPLICANTS!

Jelf IS ONE OF THE OLDEST, CONTINUALLY OPERATING NON-PROFIT ORGANIZATIONS IN THE U.S.

In 1921, siblings Al, Freda and Janet Garber came to live in the Hebrew Orphans' Home after their father passed away and their mother was sent away due to a severe case of tuberculosis.

All three children resided in the Home until they each turned 18 years old when Al was awarded **the organization's first interest-free loan** for his schooling at the University of Georgia. Upon graduation, he established himself as a businessman and lived a life where he became known for helping others.

Today Al's legacy continues through his children, Drs. Stephen and Marianne Garber, along with his grandchildren. The two have been involved with JELF since 1972, each serving terms as Board President (Marianne twice)!

Jelfie

[JELF•Y] N. PL. JELFIES

Any student who has received a JELF loan.



FROM LEFT TO RIGHT: AL GARBER; DRs. MARIANNE AND STEPHEN GARBER; THE HEBREW ORPHANS' HOME

SHARE
THE
LOVE &
CONNECT
WITH
JELF





JELF came through for me by giving me a way to finance college when I really didn't know where my family was going to get the money."

ORIGINALLY FROM CHARLESTON, Matthew and his sister Shelley both received assistance from JELF through their college careers.

Matthew graduated from The Citadel in 1991 with a degree in computer science. During his time there, he started the college's first ever Hillel chapter. At the end of his freshman year, Matthew applied and was granted a three-year scholarship from the U.S. Army and received his commission the same morning he graduated! He then entered the Army and graduated from Ranger School. In addition to being Ranger-qualified, he is also Airborne and Air Assault qualified and in the Army Corps of Engineers.

Finally, Matthew went on to earn a Masters in Technology Management as well as Military Operational Art and Science.

Currently living in Richmond Hill, GA with his wife and three stepchildren, Matthew serves as the Commander of the U.S. Army Corps of Engineers Europe District 5.

JELF FULL CIRCLE. In 2005 while he was deployed in Iraq, Matthew shared his personal story with hundreds of donors. Matthew and Shelley have participated in JELF events and have been bringing it full circle to help keep the money moving to more students with annual contributions.




COL. MATTHEW TYLER

HOMETOWN
Charleston, SC

RESIDENCE
Richmond Hill, GA

THE CITADEL
1987 - 1991

U.S. ARMY CORPS OF ENGINEERS
District Commander



JELF taught me early on about the **VALUE OF RESOURCEFULNESS** in pursuing your dreams. I had merit scholarships, but they were not enough to cover my tuition and books. JELF's loan supplemented my scholarship funds and gave me the **PEACE OF MIND** to focus on my studies without worrying about finances. Thank you, JELF, for supporting me and so many others!"

AT 17 YEARS OLD, Jane lived with her family of six in a two-bedroom apartment on Buford Highway in Atlanta. They had recently arrived from the Ukraine on their path to the American dream. As refugees, Jane's parents were not in a position to help with college.


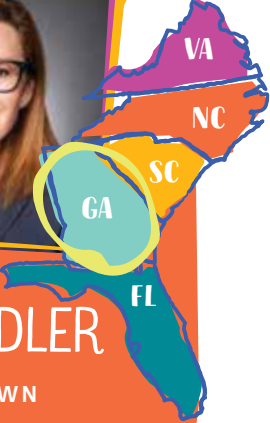
When the time came, Jane was provided a JELF interest-free loan to attend Georgia State University where she studied risk management.

Today, Jane is Vice President of Global Risk Management at McKesson, a global Fortune 8 company in the healthcare and technology

space. Most recently, McKesson has been on the forefront of distributing much needed PPE, pharmaceuticals, and other supplies to fight COVID-19. They have recently been selected as a centralized distributor of COVID-19 vaccines and ancillary supplies in support of operation Warp Speed.

Jane still lives in Atlanta, along with her husband and two children.

JELF FULL CIRCLE. Jane first became involved in JELF in 2016 and has since attended events, joined JELF's Alumni Committee and generously gives back to JELF each year.

JANE SANDLER

HOMETOWN
Atlanta, GA

GEORGIA STATE UNIVERSITY
1994 - 1995

McKESSON
Vice President,
Global Risk Management

99%
STUDENT
REPAYMENT
RATE
RECYCLING
THE FUND!
PAYING IT FORWARD



2020 IN NUMBERS

\$2.3M
TOTAL
CALCULATED
NEED

\$1M
FUNDING
GAP

394

STUDENTS HAVE BEEN
FUNDED TO DATE
COMPARED TO

296

AT THIS SAME
TIME LAST YEAR

112
ALUMNI DONORS
REPRESENTING A

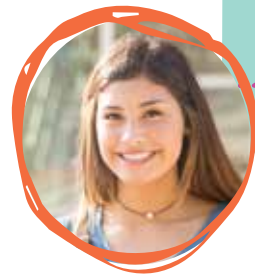
20%

INCREASE
SINCE 2019

WORKING IN
PARTNERSHIP WITH

43

JEWISH FAMILY
SERVICES, AGENCIES
& FEDERATIONS ACROSS
OUR 5-STATE REGION



“JELF HELPED
ME ATTEND
MY DREAM
SCHOOL
WHICH
LAUNCHED
ME INTO
MY DREAM
CAREER.”

LEAH M.

Firstname Lastname
Address line 1
Address line 2
City, State 12345-6789

Presort First Class
U.S. Postage
PAID
Atlanta, GA
Permit #3259

CENTRAL OFFICE
4549 CHAMBLEE DUNWOODY RD
ATLANTA, GA 30338



FEATURING
STORIES
FROM
jelf's
FORMER
BORROWERS!